

Grinder Products

Please keep contact with Grinder if you have any further questions.



Mortar Grinder MG100



Mortar Grinder MG200



Planetary Ball Mill BM40/BM6Pro



Micro Ball Mill GT200



Knife Mill HM100



Twister TW100



Multi-functional Mill CM100M



Cutting Mill CM200



Ultra Centrifugal Mill FM200



Vibratory Disc Mill DP100



Jaw Crusher JC5



Jaw Crusher JC6



Vibratory Disc Mill VM1



Vibratory Disc Mill VM3



3D Shaker Mixer M10



Vibratory Feeder VF100



Rotary Sample Divider RSD200



Vibratory Sieve Shaker SS2000



Smart Graphite Digester



Ultrasonic Bath

(The warranty period of the hosts is two years)

Company Headquarters

Address: Building 2 # 513, Taihua longqi Plaza, No. 19
Huangping Road, Huilongguan, Changping District,
Beijing
Tel: +86 010-82363427
E-mail: oversea.sale@grindertech.cn
Website: www.grindertech.cn

Orbiting Scientific & Technology Sdn. Bhd (Malaysia)

Tel: +603-9058 6581
Fax: +603-9058
E-mail: jianwei@orbitingscientific.com

Green Research Scientific Pte Ltd (Singapore)

Tel: 9628 7255
E-mail: sales@greenrs.com.sg

Vilitek LLC (Russia)

Tel: +7 495 545-07-08(105)
Fax: +7 495 221-05-76
E-mail: office@vilitek.ru

GRINDER

格瑞德曼



Knife Mills and Cutting Mills

- Twister TW100
- Knife Mill HM100
- Ultra Centrifugal Mill FM200
- Multi-functional CM100M
- Cutting Mill CM200





Twister TW100



Knife Mill HM100



Ultra Centrifugal Mill FM200



Multi-functional Mill CM100M



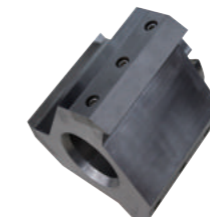
Cutting Mill CM200

● ○ Twister TW100 01-02

● ○ Knife Mill HM100 03-06

● ○ Ultra Centrifugal Mill FM200 07-11

● ○ Multi-functional CM100M/Cutting Mill CM200 12-18



Free sample testing

Grinder company provides the most professional and perfect sample preparation scheme and technical support for the customers. Application laboratory can process your sample free and recommend the most suitable instrument for you.

● Twister TW100

The cyclone mill TW100 is especially designed for food and feed sample preparation. It is suitable for various analytical techniques, such as NIR near infrared spectroscopy, Kjeldahl nitrogen determination, fiber determination and solvent extraction. The special design of the rotary knife, grinding cavity and grinding screen not only ensures the sample is not affected by the heat so as to guarantee the grinding effect, but also makes the cleaning quick and convenient.

● Applications

- **Application fields:** agriculture, pharmaceuticals, food, feed, chemistry
- **Sample type:** fibrous, soft, dry and low fat (up to 15% water and 10% fat)
- **Typical samples:** granule tablets, corn, cattle feed, noodles, medicine, beans, tobacco, etc.



Application Examples

Before grinding	After grinding	Parameter	
		Sample	corn
		Speed setting	16000rpm/min
		Sample characteristic	soft, medium-hard
		Attention	feed speed
		Time	the sample can be collected immediately after feeding
		Sample	wheat
		Speed setting	16000rpm/min
		Sample characteristic	soft, dry
		Attention	the moisture content of the sample should not exceed 15%
		Time	the sample can be collected immediately after feeding
		Sample	rice
		Speed setting	16000rpm/min
		Sample characteristic	soft, dry, brittle
		Attention	feed speed
		Time	the sample can be collected immediately after feeding
		Sample	hay
		Speed setting	16000rpm/min
		Sample characteristic	soft, fibrous
		Attention	the anti-splashing hopper should be removed before feeding
		Time	the sample can be collected immediately after feeding

● Working Principle

The samples enter the grinding chamber through the feed hopper (with anti-splashing function). Influenced by the air flow generated from the high speed rotating knife (impeller), the samples impact and frict intensely with the rotary blade and fixed screen so as to be crushed in a very short time. The crushed samples are driven by the turbine airflow to the receiving bottle in the low pressure area. The turbine airflow provides additional cooling conditions and cleaning functions, which guarantees the preservation of the ground samples. TW100 can provide very fast and convenient samples treatment, and it is suitable for various analytical techniques.



● Features and advantages

- Powerful motor and high speed ensure high grinding efficiency
- Cyclone separator can collect samples quickly
- No cross contamination, easy to clean
- Professional industrial design, long service life

Technical Data

Maximum feeding size	< 10 mm	Rotor diameter	98mm
Final fineness	< 250µm	Rated power	1100W
Speed Setting	10000~16000rpm/min	Power supply	220V,50Hz
Rotor peripheral speed	82 m/s	Instrument size (W*D*H)	359*339*483mm
Batch feeding volume*	< 250ml	Package size (W*D*H)	466*516*630mm

Order information — Twister TW100

Item No.	Weight(Kg)	
24.883.0001	20.00	TW100,220V,50Hz , Incl. rotor(Al),grinding ring,sieve section(0.5mm & 0.8mm),2sample bottles 250ml
01.883.0001	0.01	sieve section 0.5mm
03.883.0001	0.20	standard grinding ring
03.883.0003	0.20	rotor,aluminum
02.866.0101	0.20	sample bottles,250ml,10pcs,glass

● Knife Mill HM100

● Applications

○ **Sample type:**

Soft, elastic, fibrous, water-bearing, oily, fatty, dry sample

○ **Application example:**









Agriculture: grain, feed, etc

Biology: mouse tissue, plant leaves, seeds, seedling and germ

Medicine: Chinese medicine, pills, etc

Food: dried melon, vegetables, frozen food, cocoa, candy, preserved fruit, meat

Application Examples

Before grinding	After grinding	Parameter	
		Sample	pork
		Speed setting	6000rpm/min
		Sample characteristic	high oil and fat
		Attention	the feed size must be less than 2-3cm
		Time	30s
		Sample	chives
		Speed setting	5000rpm/min
		Sample characteristic	tough , fibrous
		Attention	the feed size must be less than 4-5cm; use the gravity lid
		Time	1min
		Sample	cabbage
		Speed setting	4000rpm/min
		Sample characteristic	brittle
		Attention	the feed size must be less than 5-6cm; use the gravity lid
		Time	90s
		Sample	coffee bean
		Speed setting	7000rpm/min
		Sample characteristic	hard , high fat
		Attention	reverse first and forward direction grinding;use the gravity lid
		Time	3min

● Working Principle

The HM100 has two-blade knives at the center of the bottom of a grinding cup. A certain height gap is kept between the blades. Driven by a motor of 1,100W, the knives start rotating. Reliable crushing and homogeneous phase effects are generated via the cutting of the sharp steel knife edges. The blunt side can be selected for coarse grinding of bulk samples or the tough side for fine grinding of samples. The motor speed is electronically controlled and can be preset. The constant speed guarantees efficient and high-quality grinding homogenization. You just need 10 to 30 seconds to process samples that are usually hard to crush and get homogenized samples for analysis.

● Accessories



Grinding container autoclavable plastic

High temperature and high pressure sterilization containers, meet strict hygiene standards of food and drugs. Suitable for soft, oily, water, fat and fibrous sample



Grinding container stainless steel

Applied for granules, shell, grain sample. Suitable for medium-hard, brittle, tough sample



Knife — 2 blade, stainless steel ; serrated blade, for tough frozen meat

Knife of titanium — for grinding without heavy-metal contamination

● Features and advantages

- Strong motor power 1100W, speed adjustable
- The sample volume up to 700ml
- Autoclavable container for choice
- Grinding container in various material
- Simple operation and quick start
- Coarse grinding and fine grinding can be realized in one step
- Three modes optional: interval mode, reverse mode and press-and-play mode



● Professional grinding equipment, superior to the ordinary household mixer

Ordinary laboratories use household agitators. However, it is hard for such agitators to process many samples such as meat with skin, chewing gums, zongzi, cured meat, soft sweets and soybean, and homogenized samples cannot be made by using such agitators. It is quite easy for a HM100 crusher to grind such samples; in addition, good repeatability and reproducibility can be acquired.

HM100 grinder can provide quite high-level homogenization of the sample within 30 seconds, and the standard deviation of the analysis result for the sample is much lower than that use the household agitator.



Technical Data

Feed size	<40 mm
Final fineness	< 300 μm
Motor speed	2000~10000rpm/min
Time setting	1s-10min
Batch quantity	50-700ml
Interval mode	yes
Knives	stainless steel,titanium
Number of blades	2
Motor power	1.1KW
Power supply	220V,50Hz
Instrument size(W*D*H)	260*343*454mm
Package size(W*D*H)	466*516*630mm
Net weight	17 kg

Order Information

Order Information —— Knife Mill HM100

Item No.	Weight(Kg)	
Knife Mill HM100		
24.877.0001	17.00	HM100,220V,50Hz incl. 1L grinding container of autoclavable plastic, standard lid and knife of stainless steel
Grinding containers, 1L		
01.877.1005	0.30	Grinding containers autoclavable plastic (transparent and scratch-resistant)
02.877.0002	0.45	stainless steel
Knives		
01.877.0001	0.10	knife of stainless steel
01.877.0002	0.10	knife of titanium for grinding without heavy -metal contamination
01.877.0003	0.10	knife of stainless steel with serrated blades for grinding meat
Additional item		
02.877.0008	0.03	scraper

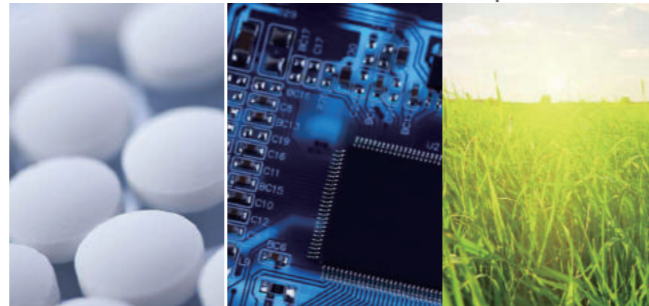
The above is only partial information of items, for more details please contact Grinder Company.

● Ultra Centrifugal Mill FM200

Ultra Centrifugal Mill FM200 applies to a wide range of samples. Based on its high efficiency grinding technology and rich accessories, with two-steps grinding of rotating knife - ring screen system ,it can process dry and wet grinding in a very short time for the soft, hard, brittle, fibrous samples.

○ Applications

Agriculture, environment, soil, electronics, RoHS testing, coal, chemistry, plastics, medicine, feed, grain, dry plants, etc.



Application Examples

Before grinding	After grinding	Parameter	
		Sample	circuit board
		Speed setting	12 teeth rotor ,stainless steel
		Sample characteristic	tough
		Attention	reject the metal part first ; the feed size must be less than 8mm
		Time	the sample can be collected immediately after feeding
		Sample	corn
		Speed setting	12 teeth rotor ,stainless steel
		Sample characteristic	hard
		Attention	feed size must be less than 8mm
		Time	the sample can be collected immediately after feeding
		Sample	dog food
		Speed setting	12 teeth rotor ,stainless steel
		Sample characteristic	oily
		Attention	feed size must be less than 8mm
		Time	the sample can be collected immediately after feeding
		Sample	traditional Chinese medicinal materials
		Speed setting	12 teeth rotor ,stainless steel
		Sample characteristic	fibrous
		Attention	dry ;feed size must be less than 8mm
		Time	the sample can be collected immediately after feeding

● Diversified application, efficient sample preparation



Diversified application

- Ecological environment protection: plants (root, stem and leaf, etc.) sample preparation, C.H.N determination
- Coal, coatings sample preparation; ash content, thermal measurement
- Identify the nitrogen composition and protein composition of feed and food
- Secondary fuel, rubbish, plastic, electronic elements, the determination of harmful substances

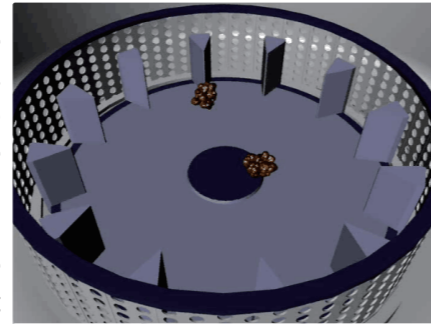
The accessories such as rotor, ring sieves, collecting pan, cover can be removed and reinstalled quickly without tool to meet the requirement for preparing a large quantity of sample.

● The grinding art for special samples

- Plastic and rubber samples will become brittle and easy to grind in liquid nitrogen condition.
- The distance ring sieve and automatic vibratory feeder can be used for grinding heat-sensitive samples such as paint, resin.
- The rotor and ring sieve with wear-resisting coatings can be used for grinding rigid and corrosive materials such as fertilizers, chemicals.

● Working Principle

The Ultra Centrifugal Mill can realize two-stage crushing for samples with the rotor and ring sieves. Samples are fed from the hopper with anti-splashing design. Under the effect of high speed centrifugal force, the falling samples and the high speed rotor generate a giant impact force to perform pretreatment for samples; then the samples are sheared, extruded and rubbed again between the rotor and ring sieves. The sample will enter into the collecting pan when the size is less than the aperture of ring sieves. The two-stage crushing guarantees moderate and efficient grinding results. Due to the high crushing efficiency, the period of samples staying in the grinding chamber is quite short so as to avoid changes of sample natures.



● Features and advantages

- Rich accessories for choice ensure the application of diversification.
- The final fineness less than 40 μ m.
- Speed adjustable from 6000-18000rpm.
- Two stage rotor—ring sieve system to realize quickly grinding.
- Low noise, reliable operation, easy cleaning.
- Rotor diameter 95mm and peripheral speed up to 99.43m/s ensure efficient grinding.
- Touch control panel, convenient and quick.
- The fineness depends on the ring sieve.

● Technical highlights

- The specially designed air passage can guarantee that the grinding chamber has constant airflow to cool rotors and samples.
- There is a double layer wear proof seal ring between the grinding chamber and the driving motor to prevent dust from entering the motor.
- The electronic lock and the mechanical lock form double protection for operators.
- The anti-splashing hopper can effectively prevent feedstock blocking and reduce noises.
- Special adapters can be equipped for large-capacity collections.
- The motor has the function of overload protection, and it can keep running after restarting due to overload.

● Automatic feed device and large sample receiver

Ultra Centrifugal Mill FM200 can be equipped with an automatic feed device, which can guarantee highly homogeneous grinding results and avoid the risk of sample feed overload.

The ground samples are collected in a collecting pan, which is convenient for collection without sample loss and prevents cross contamination of samples.

When using a cyclone or a filter bag, the ground samples can be cooled via airflow and leave the grinding chamber quickly via the collecting pan with an exit. If a vacuum cleaner is connected, the process can be faster and more efficient. The cyclone can be used in conjunction with 250ml or 500ml sample bottles; for large volume samples, the cyclone with the capacity of 3L or 5L can be selected. All parts contacting samples can be removed manually without any tools, and it is quite convenient to clean and install such parts.

● Diversified accessories

Rotor

There are 3 kinds of rotors for choice, 24 teeth, 12 teeth and 6 teeth. The 24 teeth is for the crushing of fine sample, while the 12 teeth for general sample and the 6 teeth for coarse massive sample.

Ring sieves

Final fineness depends on the different aperture ring sieve. We also provide the reinforcing screen to enhance the stability of the ring sieve.



- The material of all the rotors and the ring sieves not only has stainless steel but also the heavy-metal-free for choice to meet different laboratory requirements.
- The rotor and the ring sieve should be chosen reasonably according to the properties of the samples, the required final fineness and subsequent analysis.
- We offer a special ring sieve with shear function, for most materials, about 80% of the samples can reach the fineness of less than the half aperture size of the sieve used.

● Ultra Centrifugal Mill FM200

Technical Data

FM200			
Feed size	<10mm	Collecting pan volume	900ml(volume of the sample collected no more than 300ml)
Final fineness	<40µm	Rated power	760W
Motor speed	6000 - 18000rpm/min	Power supply	220V , 50Hz
Peripheral speed	29.83-99.43m/s	Instrument size (W*D*H)	400*456*490mm
Rotor diameter	95mm	Package size (W*D*H)	590*590*630mm
Ring sieve	0.20,0.50,1.00,2.00mm	Net weight	33Kg

Order information —Ultra Centrifugal Mill FM200

Item No.	Weight(Kg)
----------	------------

(Please order rotor and sieve separately)

24.881.0001	33.00	FM200 , 220V , 50Hz
Accessories Rotor		
01.865.0001	0.65	6 teeth stainless steel
01.865.0002	0.65	12teeth stainless steel
01.865.0003	1.00	24 teeth stainless steel
01.865.0006	0.70	collecting pan and gasket, stainless steel
01.865.0004	11.50	vibratory feeder VF100 , incl.chute, hopper
01.865.0007	1.00	cyclone seperator (incl. 1L sample bottle 1 pc)
Ring sieves of stainless steel		
02.865.0001	0.10	trapezoid holes, 0.2 mm
02.865.0002	0.10	trapezoid holes, 0.5 mm
02.865.0003	0.10	trapezoid holes, 1.0 mm
02.865.0004	0.10	round holes, 2.0 mm
for grinding without heavy-metal contamination		
01.865.0005	0.30	rotor, 12teeth of pure titanium
01.865.0006	0.70	collecting pan with coating titanium ,incl.pan and lid with gasket
01.865.0010	0.10	gasket for pan lid 10pcs/kit
Ring sieves of coating titanium		
02.865.0006	0.10	trapezoid holes, 0.2 mm
02.865.0007	0.10	trapezoid holes, 0.5 mm
02.865.0008	0.10	trapezoid holes, 1.0 mm
02.865.0009	0.10	round holes, 2.0 mm

● Cutting Mill CM200

CM200 it is an ideal machine for the sample pretreatment of heavy-metal-free RoHS and WEEE test (e.g. rubber, plastics, garbage, circuit board, etc.). It is always used to process solid samples in batch or continuously, such as the wood, paperboard, paper, spice, straw, leather, rubber, raw material, bone, animal feed, cable, plastic, electric wastes, non-metallic waste, grain, lignite, peat and so on . For the long fiber and big volume sample it can process directly and do not need the pre-crush.

Application Examples

Before grinding	After grinding	Parameter	
		Sample	straw
		Rotor	standard rotor stainless steel
		Sample characteristic	soft
		Attention	feed size less than90mm, dry
		Time	1-3min
		Sample	dog chew bones
		Rotor	standard rotor stainless steel
		Sample characteristic	brittle, medium-hard
		Attention	feed size less than90mm
		Time	3-5min
		Sample	circuit board
		Rotor	24-disc rotor stainless steel
		Sample characteristic	tough, hard
		Attention	feed size less than 90mm. Remove the metal part before grinding
		Time	3-5min
		Sample	chrysanthemum
		Rotor	standard rotor stainless steel
		Sample characteristic	oily,soft
		Attention	feed size less than90mm
		Time	1-3min
		Sample	plastic
		Rotor	6-disc rotor stainless steel
		Sample characteristic	soft,tough
		Attention	feed size less than 90mm , recommend to use with a cyclone separator
		Time	3-5min

● Working Principle

The cutting mill processes the sample by the strong cutting and shear force. The sample to be processed falls into the cutting chamber via the hopper and is shredded by cutting between rotating and fixed knives until it passes an attached sieve as ground product into the collection bucket.

● Easy operation and cleaning



The operation of CM series is quite simple and safe. The electric safety switch can prevent the device from being started when the door is open. The anti-splashing design is used for the feed hopper. The rotating knife, bottom sieve and hopper can be easily removed and re-installed. Such designs greatly facilitate the cleaning of the grinding chamber.

● Anti-splashing hopper



Technical Data

CM200			
Feed size	< 90mm	Collector	5L or 0.5L,1L,2L,30L
Final fineness	0.1~20mm	Rated power	3.0KW
Motor speed	50-3000rpm/min	Power supply	380V,50Hz
Batch quantity	5L or 0.2-60Kg/h	Instrument size(W*D*H)	640*825*1510mm
Sieves	0.20/0.5/1.00/2.00/4.00/6.00/8.00/	Package size(W*D*H)	900*960*1450mm
	10.00/20.00mm	Net weight	130Kg

● Multi-functional Mill CM100M

Multi-functional CM100M, which is a unique product from Grinder. It is suitable for various soft, tough, fibrous and hard dry samples. It can be used for batch processing and continuous coarse crushing and fine crushing.

M1 cutting type can handle fibrous, tough materials, such as tobacco, leather, circuit boards and so on;

M2 cross beater type can deal with the mid-hard, brittle materials (hardness no more than 6Mohs), such as slag, coke, soil and so on;

M3 rotor beater type can handle soft, food samples, such as cereals, feed and chemicals.



● Features and advantages

- Through three different grinding accessories to achieve different functions, which is suitable for wider range of samples.
- The final fineness is up to 100 microns. The size of the sample is controlled by the bottom sieve and sieve with different sizes can be selected.
- A large amount of sample can be processed continuously, ranging from a few kilograms to several hundred kilograms per hour.
- All the three types can be equipped with small sample receiver and cyclone separator, which is convenient for sample collection, chamber cleaning and heat generation reduction.
- Equipped with crushing dust collection device to prevent cross contamination.
- It can be fixed on the floor and equipped with casters to move easily.
- With quick locking device and motor braking, it has high safety performance.
- The grinding process is rapid and produces less heat.

● Safe and user-friendly design

Three types of CM100M are with security and user-friendly design, for example: braking motor (braking time is less than 0.5 seconds), the instrument will stop immediately when the door is opening; rotors, bottom sieve, grinding chamber inner ring, door and hopper are easy to replace; with design of anti-splashing and inlet shielding design for inlet and outlet of samples.

● Applications

M1: paper, cardboard, medicinal materials, seasoning, wood, straw, leather, rubber, equipment raw materials, bones, cable, plastic, electronic waste, non-metallic waste;

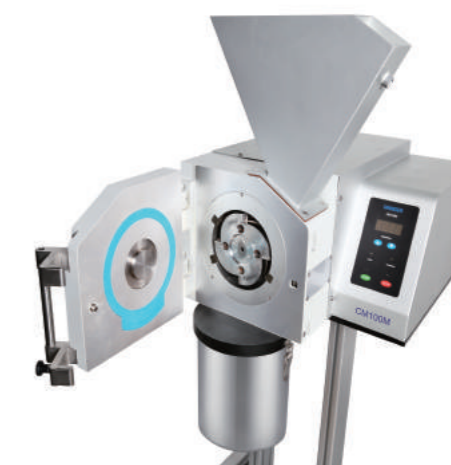
M2: soil, metal ore glass, coking coal, mineral, oxide ceramics, slag, ballast, cement slag, etc.

M3: chemical, medicinal materials, seasoning, fertilizer, rare earth, fly ash, flue ash, grain, seeds, granule feed, pharmaceutical products and so on.

● Working Principle

M1-cutting type

The sample passes through the hopper into the grinding chamber and is cut by the shearing action between a rotor and a fixed cutting bar. When the sample size is smaller than the aperture on the sieve plate, the sample falls into the collecting bucket.

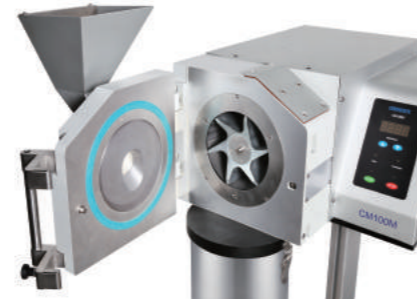


M2 -cross beater type

M2 type grinds the samples through beating, impacting. The sample enters the center of the chamber through the hopper. The sample is crushed between the impact plate and the gear of the embedded parts. Once the sample size is smaller than the pore size of the sieve, they will enter into the receiving container. The beater rotor draws a large amount of air through the hopper channel, thus accelerate the speed of the crushed sample departing from the crushing chamber.

M3- rotor beater type

The sample enters the center of the chamber directly through the hopper. The sample is crushed between the rotor, embedded parts and sieve. Once the sample size is smaller than the pore size of the sieve, they will enter into the receiving container. The quick locking design of the mill door ensures the convenient and fast access to the crushing cavity, and also ensures the convenience of cleaning.



180° bottom sieves:

suitable for soft and brittle grain samples



360° bottom sieves:

suitable for soft, medium hard shell grain samples

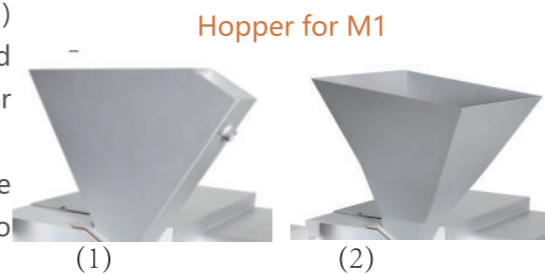
Techniques for achieving optimum grinding results

- For samples such as rubber and plastic, better results can be achieved by freezing or adding auxiliary materials.
- For fine grinding requirements, the large aperture bottom sieve shall be used for pre pulverization and then the small aperture bottom sieve for fine grinding.
- For flexible and heat-sensitive samples, the speed of less than 1000rpm while for the medium hard and soft samples, the speed above 1000rpm is preferred.

Accessories

Two kinds of feed hopper, universal V type feed hopper (1) and standard feed hopper(2).(1) is suitable for block and granule samples, and (2) suitable for long strips of plant or other materials.

The feed hopper and the shell of the instrument are made of hard steel, which is ergonomically designed and easy to operate.



Hopper for M1

Bottom sieves - various materials and aperture are available



Optional mesh size: 0.20, 0.25, 0.50, 1.00, 2.00, 3.00, 4.00, 6.00, 8.00, 10.00 mm, you can select the suitable sieves according to the sample nature and the final fineness required.

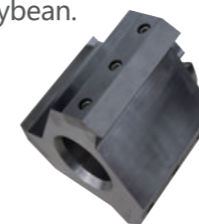
Rotor

RotorA : standard rotor, for Cutting mill CM100M1, mainly used for crushing hard and fibrous samples (such as straw).

RotorB : 6-disc rotor, for Cutting mill CM100M1, mainly used for crushing medium hard, flexible and light samples (such as plastic, rubber, circuit board).

RotorC : for Cross Beater Mill CM100M2, mainly used for crushing soil, coal, slag, glass, etc

RotorD : for Rotor Beater Mill CM100M3, mainly used for crushing grain. for example :wheat, corn, soybean.



A



B



C



D

We also provide rotors and sieves made of special material for heavy-metal-free crushing.

Can connect cyclone separator, small volume sample receiver

When the CM series is used with the cyclone separator, it is suitable for handling light or small volume samples. The use of patented cyclone separator extends the applications of the Cutting Mills. It not only effectively solves the heat transfer problem during the grinding process so as to make cleaning easily, but also improve the uniformity and repeatability of the grinding results.



Technical Data

Feed size	<25mm	Sieves	0.20\0.25\0.50\1.00\2.00\3.00\4.00\6.00\8.00\10.00mm
Final fineness	<100µm	Rated power	1.5KW
Speed	500-4000rpm/min	Power supply	220V,50Hz
Handling capacity	≥30kg/h	Instrument size(W*D*H)	590*705*1400mm(M1) 590*705*1230mm(M2/M3)
Collector	5L\30L	Package size(W*D*H)	1300*900*700mm
Peripheral speed	22m/s	Net weight	87Kg
Grinding chamber material	tungsten carbide, zirconium oxide, stainless steel of heavy-metal-free, hardened steel		

Order Information — Multi-functional Cutting Mill

Item No.

Item No.

Multi-functional Cutting Mill CM100M

24.885.0001	Multi-Functional Cutting Mill,220V,50Hz (Please order grinding assembly,hopper(only for cutting type), rotor, bottom sieve separately)		Bottom sieves of steel for grinding without heavy-metal contamination CM100M1/CM200
	Assembly for Cutting mill CM100M1	01.885.0026	square holes, 6.00 mm
		01.885.0027	square holes, 8.00 mm
01.885.0001	stainless steel cutting assembly (including cavity assembly, cavity door, 3 stainless steel cutting tips)	01.885.0028	titanium alloy sieve 0.2mm, trapezoid holes
		01.885.0029	titanium alloy sieve 0.5mm, trapezoid holes
01.885.0002	grinding assembly of without heavy-metal contamination(including cavity assembly, cavity door, and 3 steel 1.1740 cutting tips)	01.885.0030	titanium alloy sieve 1.0mm, trapezoid holes
		01.885.0031	titanium alloy sieve 2.0mm, round holes
		01.885.0032	titanium alloy sieve 4.0mm, square holes
	Rotor CM100M1/CM200	01.885.0033	titanium alloy sieve 6.0mm, square holes
01.885.0003	standard rotor stainless steel	01.885.0034	titanium alloy sieve 8.0mm, square holes
01.885.0004	standard rotor stainless steel with cutting tips of steel 1.1730(without heavy-metal contamination)		Accessories CM100M1/CM200
01.885.0005	6-disc rotor stainless steel	01.885.0008	1.1740 steel cutting bar(3pcs/set)
01.885.0006	6-disc rotor stainless steel with cutting tips of tungsten carbide	01.885.0009	stainless steel cutting tips(3pcs/set)
		01.885.0010	1.1740steel cutting tips(3pcs/set)
	Feed hopper CM100M1/CM200	01.885.0011	stainless steel cutting tips for 6-disc rotor(24pcs/kit)
01.868.0001	V type feed hopper	01.885.0012	tungsten carbide cutting tips for 6-disc rotor(24pcs/kit)
01.885.1001	standard feed hopper		Cross Beater Mill CM100M2
	Bottom sieves of stainless steel CM100M1/CM200		Assembly for Cross Beater Mill CM100M2(including cross beater parts, cavity door, hopper, hopper lid)
01.885.0014	trapezoid holes, 0.50 mm	02.885.0002	cast iron/cast iron/hardened steel
01.885.0015	trapezoid holes, 1.00 mm	02.885.0003	cast iron/cast iron/steel 1.1740
01.885.0016	round holes, 2.00 mm		Accessories CM100M2
01.885.0017	square holes, 4.00 mm	02.885.0007	cross beater cutting tips, stainless steel
01.885.0018	square holes, 6.00 mm		Bottom sieve CM100M2
01.885.0019	square holes, 8.00 mm	02.885.0010	Stainless steel, 0.2mm, trapezoid holes
01.885.0020	square holes, 10.00 mm	02.885.0011	Stainless steel, 0.5mm, trapezoid holes

The above is only partial information of items, for more details please contact Grinder Company.

Order Information — Multi-functional Cutting Mill

Item No.

Item No.

Multi-functional Cutting Mill CM100M

02.885.0012	Stainless steel, 1.0mm, trapezoid holes	03.885.0009	360° of stainless steel 1.0, trapezoid holes
02.885.0013	Stainless steel, 2.0mm, round holes	03.885.0010	360° of stainless steel 2.0, round holes
02.885.0014	Stainless steel, 4.0mm, square holes	03.885.0011	360° of stainless steel 4.0, square holes
02.885.0015	Stainless steel, 6.0mm, square holes	03.885.0012	360° of stainless steel 6.0, square holes
02.885.0016	Stainless steel, 8.0mm, square holes	03.885.0013	360° of stainless steel 8.0, square holes
02.885.0017	Stainless steel, 10.0mm, square holes	03.885.0014	360° of stainless steel 10.0, square holes
02.885.0018	steel, without heavy metal contamination, 0.2, trapezoid holes	03.885.0015	360° of without heavy-metal contamination 0.2, trapezoid holes
		03.885.0016	360° of without heavy-metal contamination 0.5, trapezoid holes
02.885.0019	steel, without heavy metal contamination, 0.5, trapezoid holes	03.885.0017	360° of without heavy-metal contamination 1.0, trapezoid holes
		03.885.0018	360° of without heavy-metal contamination 2.0, round holes
02.885.0020	steel, without heavy metal contamination, 1.0, trapezoid holes	03.885.0019	360° of without heavy-metal contamination 4.0, square holes
		03.885.0020	360° of without heavy-metal contamination 6.0, square holes
		03.885.0021	360° of without heavy-metal contamination 8.0, square holes
	Additional items	03.885.0022	180° of stainless steel 0.2, trapezoid holes
02.885.0004	stainless steel(including inner ring for cross beater parts, knife support)	03.885.0023	180° of stainless steel 0.5, trapezoid holes
		03.885.0024	180° of stainless steel 1.0, trapezoid holes
02.885.0005	hardened steel (including inner ring for cross beater parts, knife support)	03.885.0025	180° of stainless steel 2.0, round holes
		03.885.0026	180° of stainless steel 4.0, square holes
02.885.0006	1.1740 steel(including inner ring for cross beater parts, knife support)	03.885.0027	180° of stainless steel 8.0, square holes
		03.885.0028	180° of stainless steel 8.0, square holes
		03.885.0029	180° of stainless steel 10.0, square holes
	Assembly for Rotor Beater Mill CM100M3	03.885.0030	180° of without heavy-metal contamination 0.2, trapezoid holes
03.885.0001	360° retaining frame, cavity door, hopper, cavity innerring, hopper lid, stainless steel	03.885.0031	180° of without heavy-metal contamination 0.5, trapezoid holes
		03.885.0032	180° of without heavy-metal contamination 1.0, trapezoid holes
03.885.0002	360° retaining frame, cavity door, hopper, cavity inner ring, hopper lid, 1.1740 steel	03.885.0033	180° of without heavy-metal contamination 2.0, round holes
		03.885.0034	180° of without heavy-metal contamination 4.0, square holes
03.885.0003	180° retaining frame, cavity door, hopper, cavity innerring, hopper lid, stainless steel	03.885.0035	180° of without heavy-metal contamination 6.0, square holes
		03.885.0036	180° of without heavy-metal contamination 8.0, square holes
03.885.0004	180° retaining frame, cavity door, hopper, cavity inner ring, hopper lid, 1.1740 steel		Accessories CM100M1/CM100M2/CM100M3
		04.885.0002	small volume collecting bottle, 250/500ml, 10pcs
	Accessories CM100M3	04.885.0003	cyclone separator(incl collecting bottle for light sample grinding)
	Rotor		
03.885.0005	rotor, stainless steel	11.885.1043	door seal ring, CM100M1 10pcs/kit
03.885.0006	rotor, 1.1740 steel		Cutting Mill CM200 with collecting bucket 5L, stand frame (Please order rotor, hopper and bottom sieve separately)
	Bottom Sieve		
03.885.0007	360° of stainless steel 0.2, trapezoid holes	24.868.0001	CM 200, 380V, 50 Hz
03.885.0008	360° of stainless steel 0.5, trapezoid holes	24.868.0002	CM 200, 380V, 50 Hz; steel 1.1740 for grinding without heavy-metal contamination