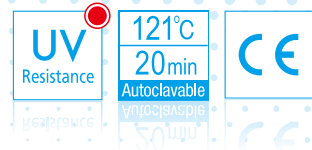


Autoclavable Multi Channel Pipette

Nichipet® EXII MULTI



Multi-Channel model of Nichipet EXII Reduced fatigue for pipetting

- Reduced the weight up to 30%. (in-house comparison)
 - Easy maintenance.
 - Reduced ejector load.
 - Lock mechanism for volume setting.
 - Durable body.
 - Revolving handle (360°) to fixate convenient position in pipetting.
- Since the volume indicator is made of glass, ultraviolet germicidal of the clean bench will not make it cloud.
 - From prolonged irradiation, the surface layer of plastic may deteriorate or discolor, but its performance is not affected.



Specifications

Cat. No	Channel	Volume setting	Volume range(μL)	Increments(μL)	Usable tips
00-NPM-8V	8	Digital setting	0.5 – 10	0.01	BMT2-UT/UTWR/UTWRB, FUT/FUTRB
00-NPM-8S			5 – 100	0.1	BMT2-SG/SGR/SGRB, FSE/FSERB
00-NPM-8L			20 – 200	0.2	BMT2-SG/SGR/SGRB, FAG/FAGRB
00-NPM-8K			30 – 300	1	BMT2-K/KR/KRB
00-NPM-12V	12		0.5 – 10	0.01	BMT2-UT/UTWR/UTWRB, FUT/FUTRB
00-NPM-12S			5 – 100	0.1	BMT2-SG/SGR/SGRB, FSE/FSERB
00-NPM-12L			20 – 200	0.2	BMT2-SG/SGR/SGRB, FAG/FAGRB
00-NPM-12K			30 – 300	1	BMT2-K/KR/KRB

* See p.19-20 for tip selection.

Accuracy and Precision

Cat. No	Volume(μL)	Accuracy(%)	Precision(%)	Cat. No	Volume(μL)	Accuracy(%)	Precision(%)	
00-NPM-8V	1	±8.0	≤5.0	00-NPM-8L	20	±3.0	≤0.6	
	5	±4.0	≤2.0		00-NPM-12L	100	±1.0	≤0.4
00-NPM-12V	10	±2.0	≤1.0	00-NPM-12L		200	±0.9	≤0.3
	10	±3.0	≤2.0		00-NPM-8K	30	±3.0	≤1.0
00-NPM-8S	50	±1.0	≤0.8	00-NPM-12K		150	±1.0	≤0.5
	100	±0.8	≤0.3			300	±0.6	≤0.3

* The AC and CV values are the values by use of the disposable tips described in the catalogue.